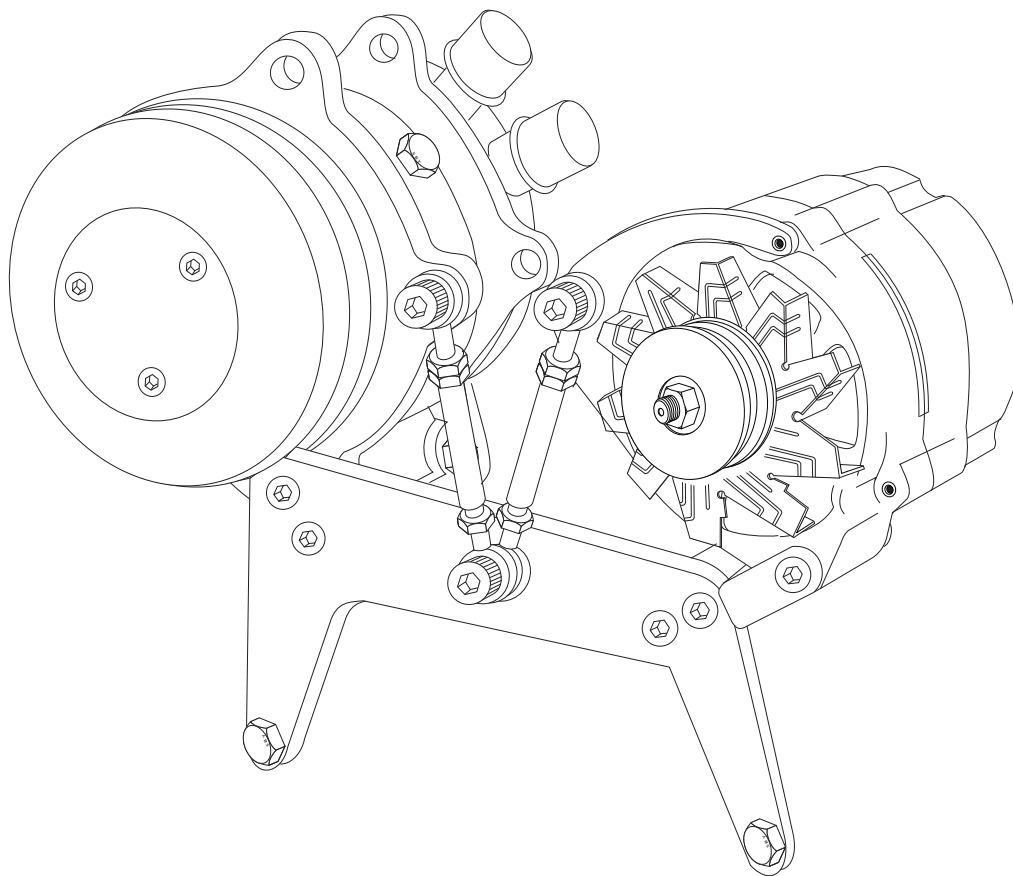




an ISO 9001:2008 Registered Company

PROLINE BRACKET LONG PUMP (17227-VCQ)



18865 Goll St. San Antonio, TX 78266 ph: 210-654-7171 fax: 210-654-3113



PROLINE BRACKET LONG PUMP

NOTE: FITS SMALL BLOCK CHEVROLET V-8 LONG WATER PUMP AND STOCK PULLEYS.

1. ASSEMBLE PARTS (1, 2 AND 3) USING ALLEN BOLTS (16 AND 17) AS FIGURE 1 SHOWS.
2. ATTACH BRACKET ASSEMBLY TO THE ENGINE USING PARTS (12, 13, 14, 19, 20 AND 21) AS FIGURE 2 SHOWS.

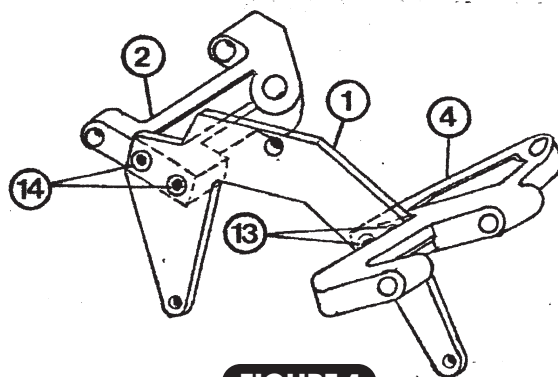


FIGURE 1

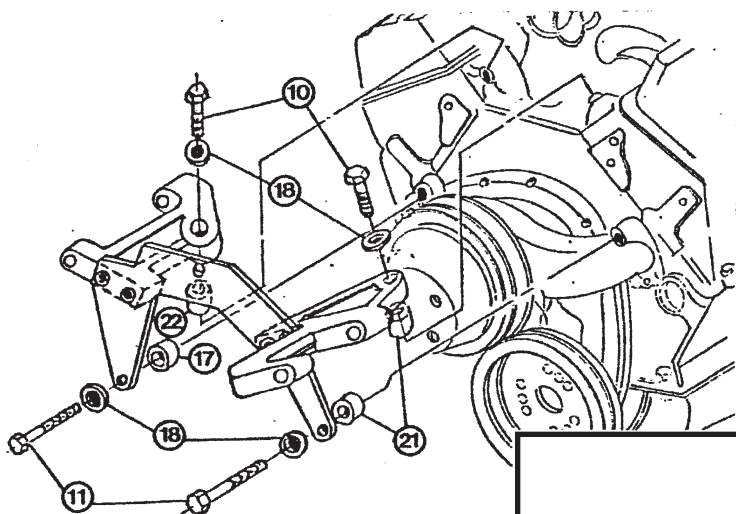


FIGURE 2

PROLINE COMPRESSOR BRACKET

17227-VCQ PACKING LIST

| NO. | QTY. | PART NO. | DESCRIPTION |
|-----|------|-----------|-----------------------------------|
| 1. | 1 | 15210-VCB | MOUNT BRACKET |
| 2. | 1 | 15211-VUB | COMPRESSOR BRACKET |
| 3. | 1 | 16205-VUB | ALTERNATOR ADJ. BRACKET |
| 4. | 1 | 16215-VCB | ALTERNATOR BRACKET |
| 5. | 2 | 16500-VUQ | ADJUSTER |
| 6. | 1 | 18002-VUB | 3/8" X 1" SHOULDER BOLT |
| 7. | 1 | 18003-VUB | 3/8" X 1 1/4" SHOULDER BOLT |
| 8. | 1 | 18004-VUB | 3/8" X 3" S.S. SOCKET BOLT |
| 9. | 1 | 18005-VUB | MS.-21042-6 NUT |
| 10. | 2 | 18008-VUB | 3/8"-16 X 2" PLAIN HEX BOLT |
| 11. | 2 | 18009-VUB | 3/8"-16 X 2 1/2" PLAIN HEX BOLT |
| 12. | 2 | 18010-VUB | 1/4" X 1/2" SOCKET BOLT |
| 13. | 2 | 18011-VUB | 1/4" X 3/4" FLAT SOCKET C/S |
| 14. | 2 | 18012-VUB | 5/16" X 3/4" FLAT SOCKET C/S |
| 15. | 2 | 18014-VUB | 10MM LOCKNUT |
| 16. | 2 | 18015-VUB | 10MM X 50MM X 1.50MM SOCKET BOLT |
| 17. | 1 | 18017-VUB | 3/4" X 13/32" X 3/8" ALUM SPACER |
| 18. | 7 | 18027-VUB | 3/8" A/N FLAT WASHER |
| 19. | 3 | 18028-VUB | 5/16" A/N FLAT WASHER |
| 20. | 1 | 18033-VUB | 3/8" X 3/4" SHOULDER BOLT |
| 21. | 2 | 18034-VUB | 3/4" X 13/32" X 7/16" ALUM SPACER |
| 22. | 1 | 18036-VUB | 3/4" X 13/32" X 5/16" ALUM SPACER |
| 23. | 3 | 18151-VUB | 5/16" COARSE LOCKNUT |



PROLINE BRACKET LONG PUMP

3. MODIFY ALTERNATOR AS FOLLOWS:

- REMOVE BOLTS FROM ALTERNATOR AS SHOWN IN FIGURE 3, AND CUT BOLTS TO 1-11/16" LONG.
 - TAP (2) 1/4"-20 HOLES. DO NOT DRILL, JUST TAP.
 - CUT EAR FROM ALTERNATOR AS SHOWN IN FIGURE 3.
 - INSTALL ADJUSTER BRACKET, PART #4, TO ALTERNATOR WITH PART #15, AND REINSTALL (2) OEM BOLTS AS SHOWN IN FIGURE 3.
- ATTACH ALTERNATOR TO BRACKET WITH PARTS #9 AND #10.
 - ATTACH ADJUSTER PART #5 TO BRACKET WITH PARTS #8 AND #22 AS SHOWN IN FIGURE 4.
 - ATTACH ADJUSTER TO ALTERNATOR WITH PARTS #6 AND #22.
 - ATTACH COMPRESSOR TO BRACKET WITH PARTS #11 AND #18.
 - ATTACH ADJUSTER TO COMPRESSOR WITH PARTS #7 AND #22.

REMOVE (2) OEM
BOLTS AND CUT
AS SHOWN, AND
RE-INSTALL.

TRIM OFF
EAR AS
SHOWN

1 11/16"

FIGURE 3

TAP 1/4"-20
DO NOT DRILL,
JUST TAP

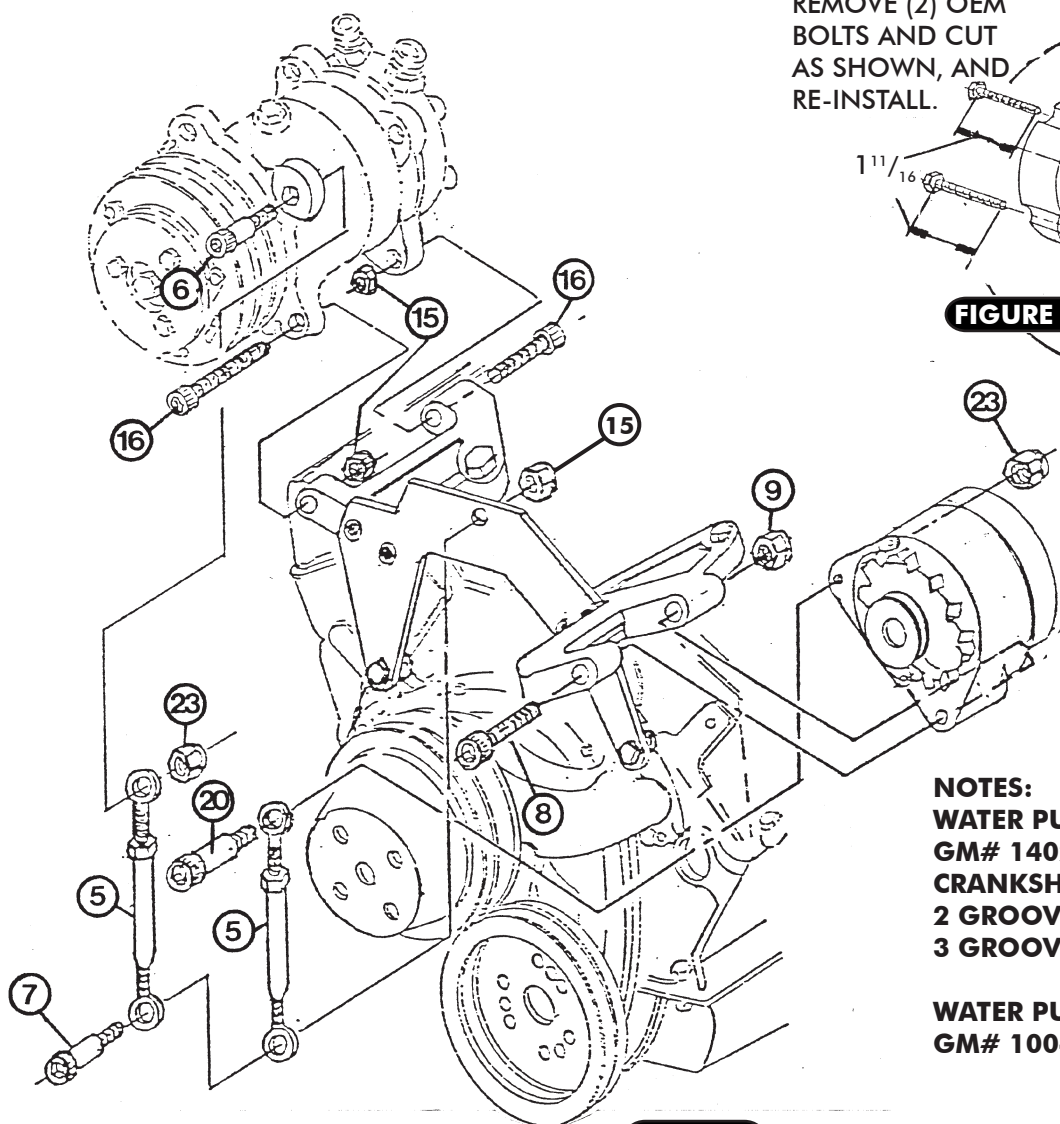


FIGURE 4

NOTES:

WATER PUMP PULLEY

GM# 14023169

CRANKSHAFT PULLEY

2 GROOVE GM #14023147

3 GROOVE GM #14023145

WATER PUMP

GM# 10048917